
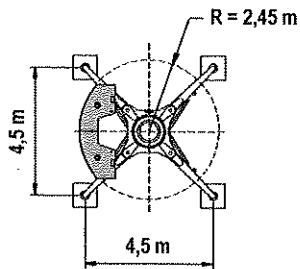
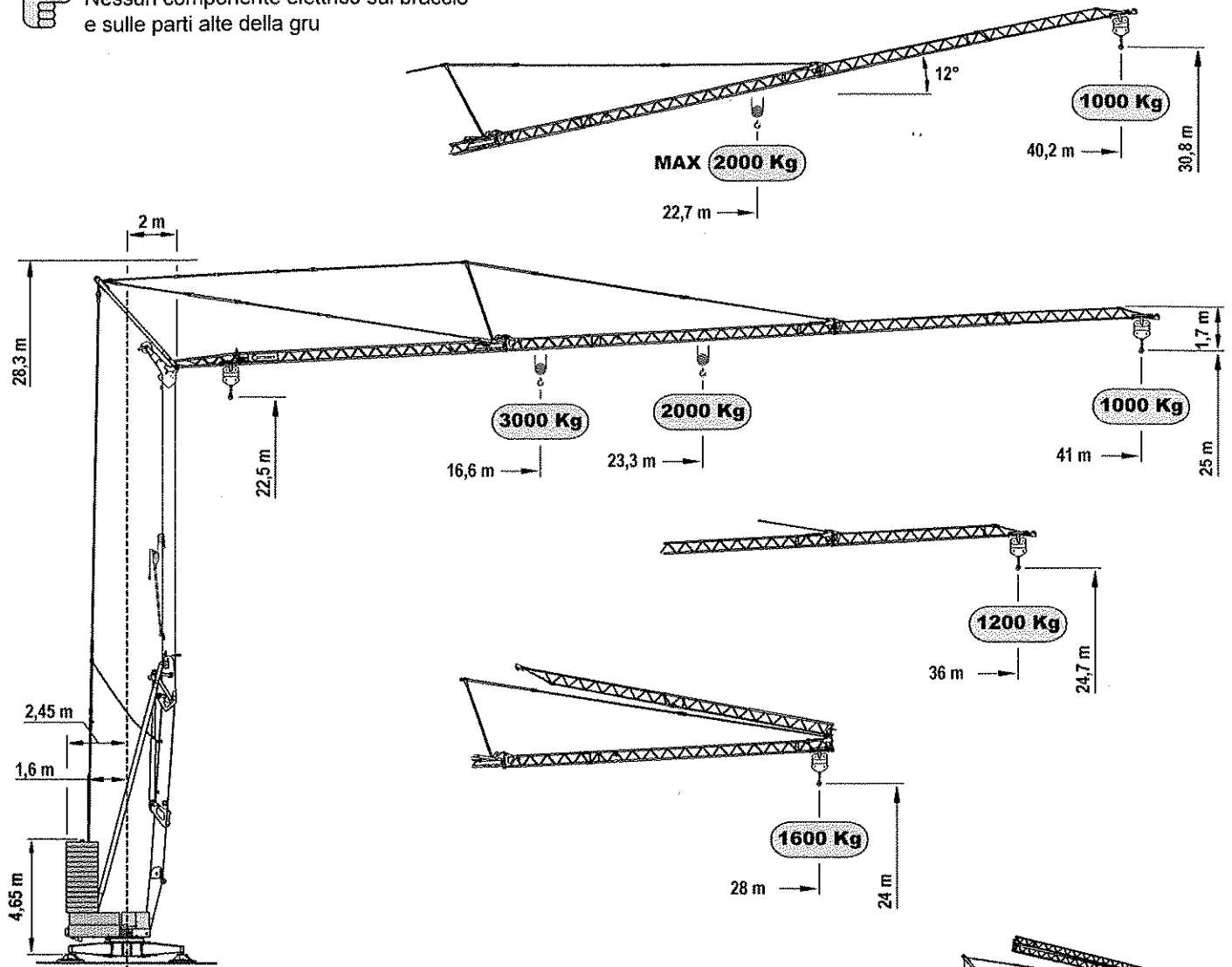


CM 90S4

 Nessun componente elettrico sul braccio e sulle parti alte della gru



portata massima kg 3000
in tiro semplice

Sistema di autozavorramento

Curve di carico	kg	3000	2500	2000	1900	1800	1700	1600	1500	1400	1300	1200	1100	1000
Load diagrams	m	16.6	19.3	23.3	24.2	25.3	26.5	27.9	29.4	31.1	33.1	35.5	37.8	41.0
Courbes de charge	m	16.9	19.6	23.6	24.6	25.8	27.0	28.4	30.0	31.7	33.7	36.0		
Lastkurven	m	16.6	19.4	23.3	24.3	25.4	27.6	28.0						
Curvas de cargas	m			22.7	23.7	24.8	26.0	27.4	28.8	30.5	32.4	34.6	37.0	40.2