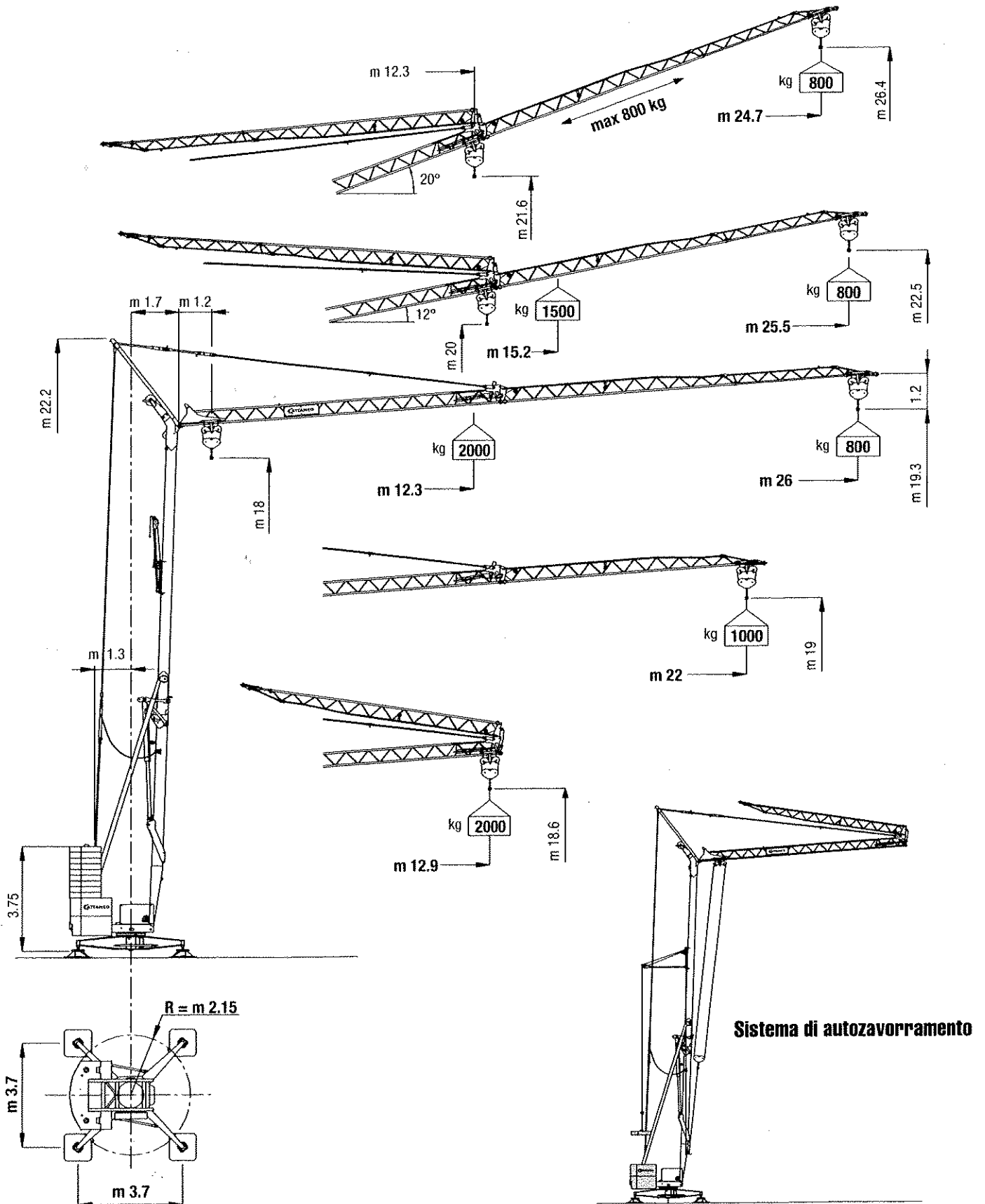




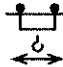


# CM 76B



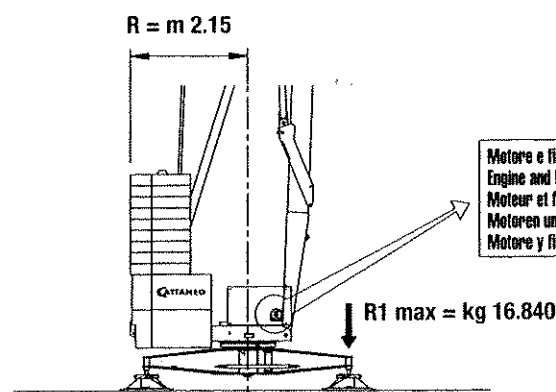
Curve di carico	kg	2000	1800	1600	1500	1400	1200	1000	800
Load diagrams	m	12.3	13.4	14.7	15.5	16.4	18.6	21.6	26.0
Courbes de charge	m	12.4	13.5	14.9	15.7	16.6	18.9	22.0	
Lastkurven	m				15.2	16.1	18.3	21.2	25.5
Curvas de cargas	m								



# CM 76B

		1°	2°	3°	CV	KW
 Sollevamento Hoisting Levege Hubwerk Elevación	 m/1' kg	5	21	42	9	6,6
		2000	2000	1000		
 Carrello - Trolley Chariot - Katzfahrwerk Carro	m/1'		23 - 46		1,75	1,3
 Rotazione - Slewing Orientation - Drehwerk Rotación	g/1'		0 → 0,4 → 0,9		3	2,2
 Potenza elettrica necessaria Necessary electric power Puissance électrique nécessaire Anschlusswert Potencia eléctrica necesaria	<b>KVA</b>	12 kVA - 400 V - 50Hz				

Contrappeso in lastre di cemento armato - Ferro-concrete ballast slabs  
 Contrepoids en plaques de béton armé - Gegenballast aus Stahlbetonplatten - Lastre en hormigón armado



kg 1350 x n. 2 + kg 1450 x n. 2 + kg 850 x n. 9

Massa gru (con assale da cantiere) Weight of crane (with yard axle) Poids de la grue (avec essieu de chantier) Konstruktionsgewicht des Krans (mit Rangierfahrwerk) Peso grúa (con eje para obra)	<b>kg 9.850</b>
Massa contrappeso Counterweight Contrepoids Gegengewicht Contrapeso	<b>kg 13.250</b>

Trasporte - Transport - Transport - Transport - Transporte

