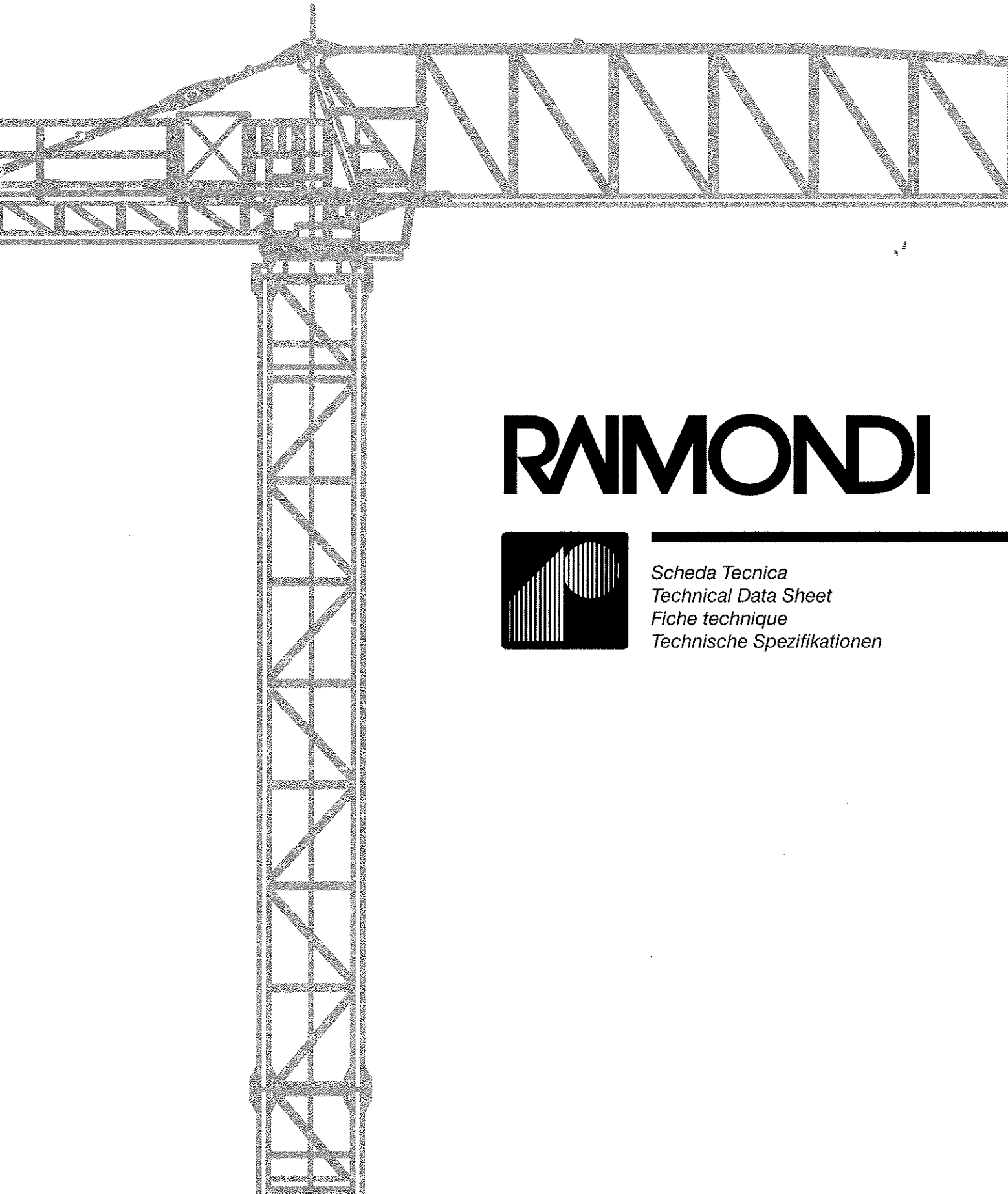


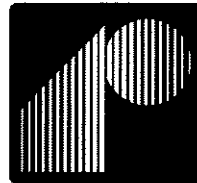


GRU DA CITTÀ SENZA CUSPIDE · TOP LESS CITY CRANE
CITY CRANE SANS POINÇON · CITY KRAN OHNE TURMSPITZE

MRT102



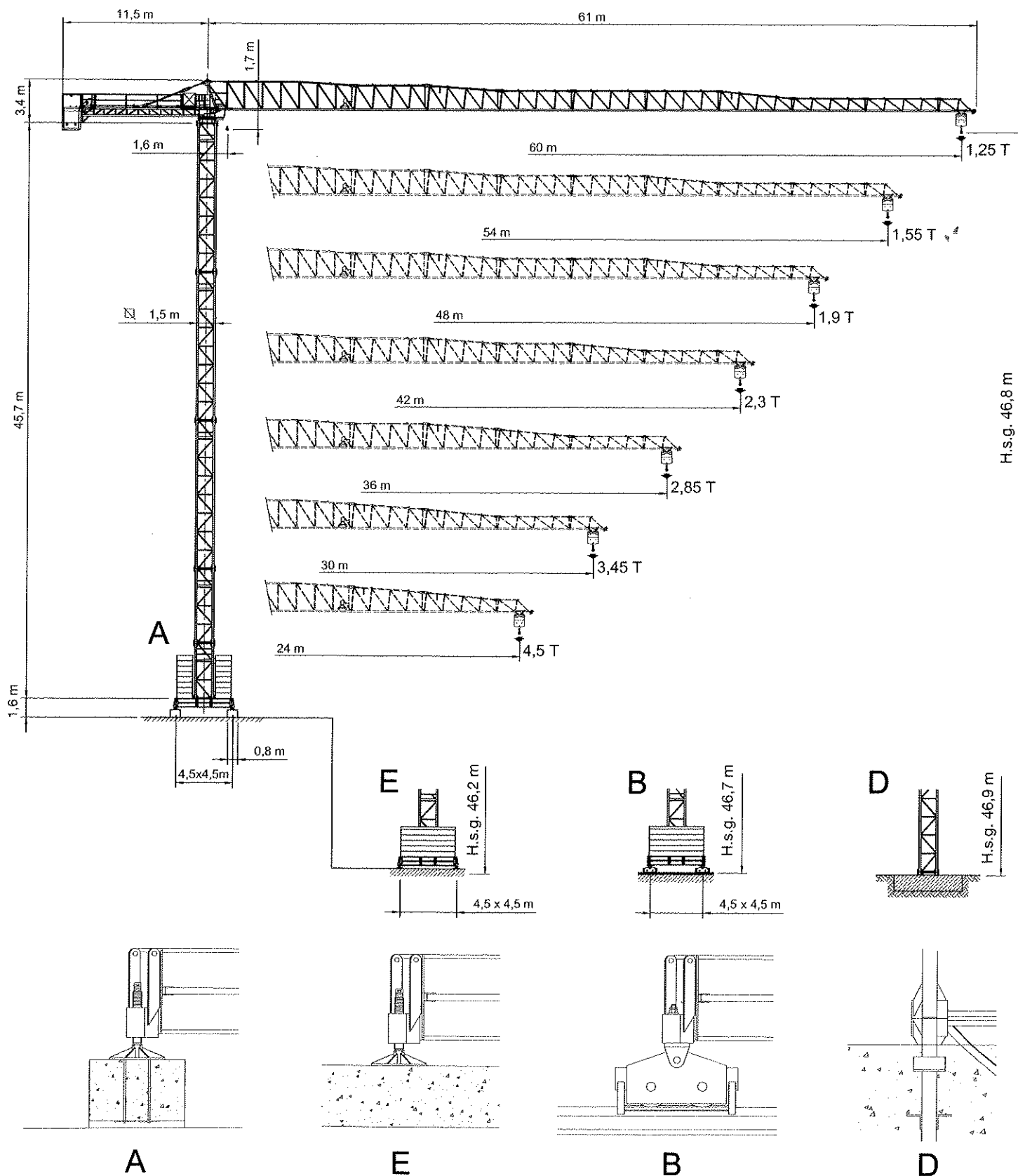
RAIMONDI



Scheda Tecnica
Technical Data Sheet
Fiche technique
Technische Spezifikationen

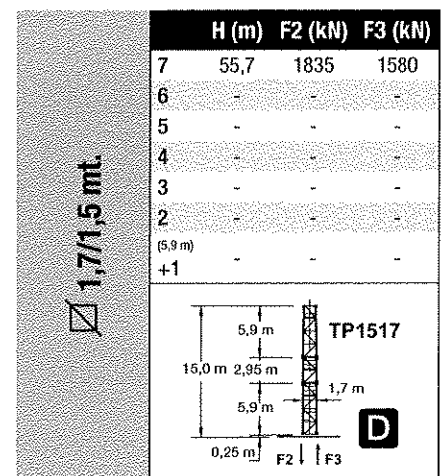
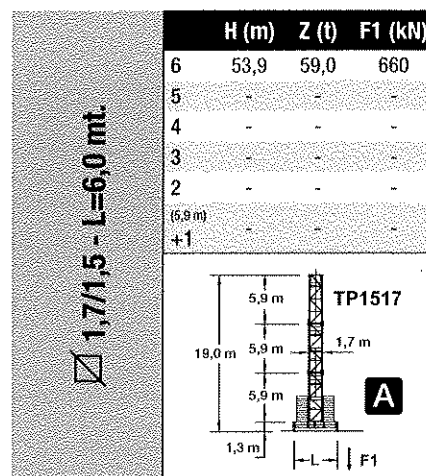
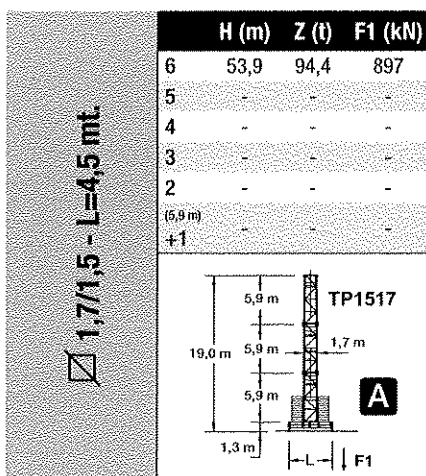
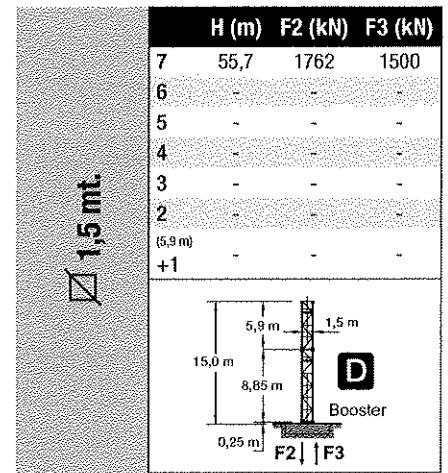
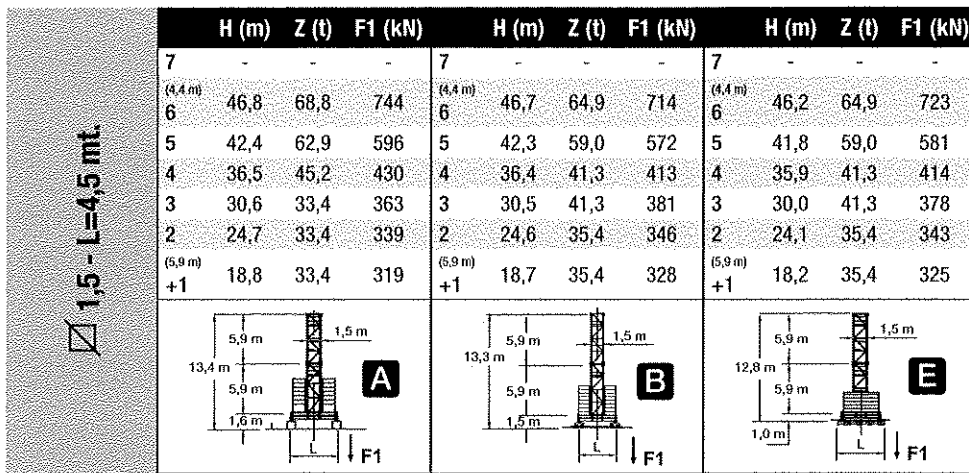
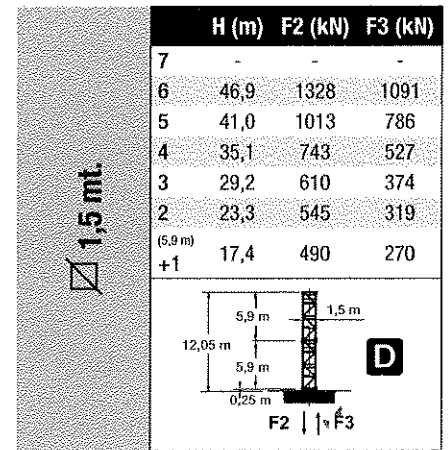
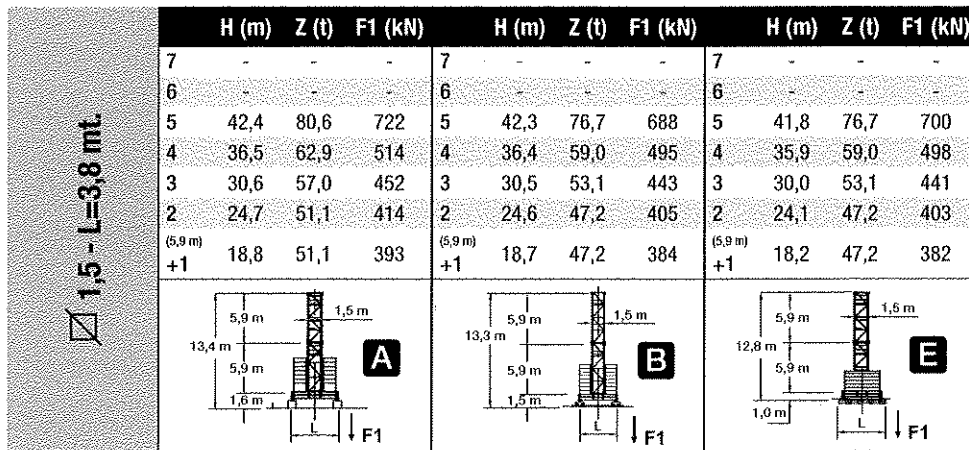


A4 FEM1,001






ALTEZZA SOTTOGANCIO

Height under hook / Hauteur sous crochet / Hakenhöhe



PORTATA

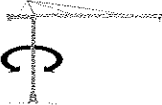
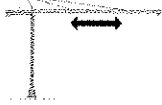
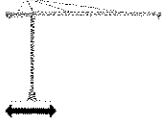
Load - Charge - Tragfähigkeit

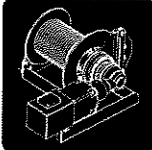


Portata max / Max s.w.l. Charge maxi / Max. Tragfähigkeit		 3000 Kg.								 6000 Kg. / 3000 Kg. 							
Sbraccio / Jib Ausladung / Portée	m.	24	30	36	42	48	54	60	24	30	36	42	48	54	60		
Campo di portata max da Max s.w.l. range from Charge maxi de 1,6 m Max. Tragfähigkeit von	a to à bis	24,0	30,0	34,4	33,2	32,2	30,5	28,5	18,6	18,5	18,4	17,9	17,5	16,8	15,8		
Sbraccio (m.) Radius (m.) Portée(m.) Ausladung(m.)	12	3000	3000	3000	3000	3000	3000	3000	6000	6000	6000	6000	6000	6000	6000		
	14	3000	3000	3000	3000	3000	3000	3000	6000	6000	6000	6000	6000	6000	6000		
	16	3000	3000	3000	3000	3000	3000	3000	6000	6000	6000	6000	6000	6000	5935		
	18	3000	3000	3000	3000	3000	3000	3000	6000	6000	6000	5967	5814	5537	5188		
	20	3000	3000	3000	3000	3000	3000	3000	5540	5506	5458	5295	5157	4909	4597		
	22	3000	3000	3000	3000	3000	3000	3000	4971	4940	4896	4749	4624	4399	4116		
	24	3000	3000	3000	3000	3000	3000	3000	4500	4471	4431	4297	4183	3977	3719		
	26		3000	3000	3000	3000	3000	3000		4077	4040	3916	3811	3622	3384		
	28		3000	3000	3000	3000	3000	3000		3740	3707	3592	3494	3319	3098		
	30		3000	3000	3000	3000	3000	2828		3450	3418	3311	3221	3057	2852		
	32			3000	3000	3000	2844	2628			3167	3067	2982	2829	2637		
	34			3000	2923	2821	2656	2453			2946	2852	2772	2628	2447		
	36			2850	2740	2645	2489	2297			2750	2661	2586	2450	2280		
	38				2578	2487	2340	2159				2491	2420	2292	2130		
	40				2432	2346	2206	2034				2338	2271	2149	1996		
	42				2300	2218	2085	1921				2200	2136	2020	1874		
	44					2102	1975	1819					2014	1903	1764		
	46					1997	1875	1726					1902	1796	1663		
	48					1900	1783	1641					1800	1699	1571		
	50						1699	1562						1609	1487		
52						1622	1490						1526	1409			
54						1550	1423						1450	1337			
56							1361							1270			
58							1304							1208			
60							1250							1150			

Con sistema "ULTRALIFT" tutte le portate intermedie sono aumentate del 10%
All intermediate loads are increased of 10% if the crane is equipped with "ULTRALIFT" control
Les charges intermédiaires sont augmentées de 10% si la grue est équipée avec contrôle "ULTRALIFT"

CARATTERISTICHE AZIONAMENTI PRINCIPALI

General Technical Characteristics - Caracteristiques des mecanismes de distribution - Allgemeine Technische Daten

		Velocità - Speed Vitesse - Geschwindigkeit	Potenza - Power Puissance - Leistung
Rotazione - Slewing Orientation - Schwenken		0,23 / 0,47 / 0,71 min ⁻¹	2 x 4 Kw
Carrello - Trolley Chariot - Katzfahren		18,8 / 35,2 / 54 m/min Progressivo - Progressive	3,6 Kw
Traslazione - Rail Translation - Kranfahren		18 m/min	2 x 3 Kw

Tipo Type Type Type		Potenza-power puissance - Leistung		Fune rope cable Seil	Marcia Step Vitesse Gang				
		CV - ch - PS - hp	kW			kg	m/min	kg	m/min
25 HP - 6 VF		25	18,4	190	1	3000	6	6000	3
					2	3000	30	3000	15
					3	1500	60	3000	30
					4	1000	72	2000	36
33 HP - 6 VF		33	24,3	234	1	3000	9,1	6000	4,6
					2	3000	36,5	6000	18
					3	1500	73	3000	36,5
					4	1000	90	2000	45

Conforme alla direttiva 2000/14/CE sul livello acustico - In compliance with the 2000/14/CE instruction on noise level - Conforme directive 2000/14/CE sur le niveau acoustique - Gemiss 2000/14/CE ber Schall - Leistungspegel - Conforme con la directive 2000/14/CE sobre el nivel acustico

Forza motrice totale Total installed power Puissance totale des moteurs Gesamt-motorenleistung	18,4 Kw (25HP)	24,3 Kw (33HP)
	36 Kw	42 Kw

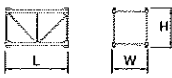
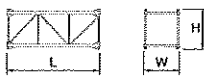
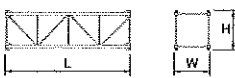
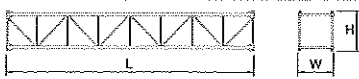

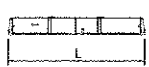

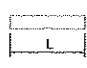
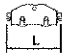

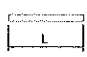
PESI E INGOMBRI

Packing list - Liste de colisage - Kolli-Liste

Pos. Item	Pezzi Pieces	Denominazione Description	Schizzo Sketch	Dimensioni Dimensions			Peso Weight		
				L	W	H	Unit	Total	
1	1	Elemento di freccia Jib element Elément de flèche Ausleger	n° 1		11,960	1,200	2,380	2021	-
	1		n° 2		6,110	1,200	2,070	770	-
	1		n° 3		6,100	1,200	2,070	711	-
	1		n° 4		6,070	1,200	1,660	570	-
	1		n° 5		6,030	1,200	1,640	501	-
	1		n° 6		6,015	1,200	1,640	453	-
	1		n° 7		6,015	1,200	1,620	425	-
	1		n° 8		5,985	1,200	1,070	387	-
	1		n° 9		5,985	1,200	1,070	318	-
	1		1	Puntale freccia Jib point Elément pointe Spitzelement		2,860	1,200	1,070	185
2	1	Controfreccia girevole, organo di sollev., quadro elettrico, carrello freccia etc. Counterjib-tournable, hoisting winch, trolley jib, electrical box etc. Contreflèche tournante, treuil de levage, chariot de flèche, armoire électrique etc. Gegenausleger, Hubwinde, Laufkatze Schaltschrank etc.		11,900	2,230	2,550	6885	-	
	1	Controfreccia girevole, organo di sollev., quadro elettrico, carrello freccia, cabina Counterjib-tournable, hoisting winch, acces balcony, trolley jib, electrical box, cabin, etc. Contreflèche tournante, treuil de levage, chariot de flèche, armoire électrique, cabine Gegenausleger, Drehwerk, Hubwinde, Laufkatze, Kabine, Schaltschrank, Kabinenpodest		11,900	3,380	2,550	7480	-	
3	1	Controfreccia girevole, organo di sollev., quadro elettr., carrello freccia, cabina, elem. portablocchi Counterjib-tournable, hoisting winch, trolley jib, electrical box, acces balcony, terminal element Contreflèche tournante, treuil de levage, chariot de flèche, armoire électrique, cabine et élément terminal Gegenausleger, Drehwerk, Hubwinde, Laufkatze, Kabine, Schaltschrank, Kabinenpodest, Gegengewichtelement		13,500	3,380	2,550	8030	-	
4	6	Blocchi di contrappeso Counterweight block Contre-poids Gegengewichtsblocke	A99+3		1,430	0,265	2,800	2131	12786
	2		B99+3		1,430	0,210	2,800	1684	3368

PESI E INGOMBRI

Packing list - Liste de colisage - Kolli-Liste

Pos. Item	Pezzi Pieces	Denominazione Description	Schizzo Sketch	Dimensioni Dimensions			Peso Weight		
				L	W	H	Unit	Total	
6	-	Elemento di torre Tower element Elément de mât Turmstück		2,950	1,700	1,500	1172	-	
7	-			4,425	1,700	1,500	1590	-	
8	-			5,900	1,700	1,500	1990	-	
9	-			11,800	1,700	1,500	3682	-	
10	1	Tronchetto di fondazione Expendable foundation element Elément a sceller Fundamentanker		1,465	1,780	1,780	780	-	
11	1	Trave principale della crociera di base Base main beam Poutre de chassis de base Hauptträger für Kreuzgelenk		4,5x4,5 mt	6,530	0,710	0,760	2120	-
				3,8x3,8 mt	5,535	0,710	0,760	1460	-
12	2	Semitrave della crociera di base Half base beam Semipoutre de chassis de base Halbträger für Kreuzgelenk		4,5x4,5 mt	3,200	0,590	0,770	1030	2060
				3,8x3,8 mt	2,620	0,590	0,770	940	1880
13	4	Blocco di appoggio Concrete pad Sabot en béton Betonfuss		3,600	0,800	0,600	3925	15700	
14	2	Bilancino di traslazione folle Driving bogie Boggie fou Fahrschemel ohne motorantrieb		1,080	0,230	0,515	416	830	
15	2	Bilancino di traslazione motorizzato Driven bogie Boggie motorisée Fahrschemel mit Motorantrieb		1,550	0,500	0,515	535	1070	
16	28	Blocco di zavorra Base ballast block Lest de base Grundballastblöcken		3,600	1,200	0,300	2950	76700	

PESI E INGOMBRI

Packing list - Liste de colisage - Kolli-Liste

Pos. Item	Pezzi Pieces	Denominazione Description	Schizzo Sketch	Dimensioni Dimensions			Peso Weight		
				L	W	H	Unit	Total	
City - 1,7 m									
17	6	Elemento di torre 1,7/1,5 m 1,7/1,5 m Tower element 1,7/1,5 m Elément de mature 1,7/1,5 m Turmstück		5,900	1,700	1,900	2205	-	
18	-			2,950	1,900	1,700	172	-	
19	-	Elemento di torre Tower element Elément de mature Turmstück		2,950	1,900	1,700	2267	-	
20	-			11,800	1,900	1,700	4135	-	
21	1	Tronchetto di fondazione Expendable foundation element Elément a sceller Fundamentanker		1,465	1,980	1,980	830	-	
22	1	Trave principale della crociera di base Base main beam Poutre de chasis de base Hauptträger für Kreuzgelenk		4,5x4,5 mt	6,524	0,780	0,960	2595	-
				6,0x6,0 mt	8,645	0,780	0,960	3475	-
23	2	Semitrave della crociera di base Half base beam Semipoutre de chasis de base Halbträger für Kreuzgelenk		4,5x4,5 mt	3,212	0,680	0,974	1235	2470
				6,0x6,0 mt	4,323	0,680	0,974	1745	3490
24	4	Blocco di appoggio Concrete pad Sabot en béton Betonfuss		3,600	0,900	0,750	5520	22080	
25	2	Bilancino di traslazione foile Driving bogie Boggie fou Fahrschemel ohne motorantrieb		1,315	0,222	0,540	600	1200	
26	2	Bilancino di traslazione motorizzato Driven bogie Boggie motorisée Fahrschemel mit Motorantrieb		1,427	0,492	0,540	765	1530	

RAMPANTE

RI - 1,7 / 39

floor climbing
 telescopable sur dalles
 kletterkrane im gebaude

SOPRALZO IDRAULICO

HC - 1,7 / 39

external climbing
 telescopable
 kletterkrane

